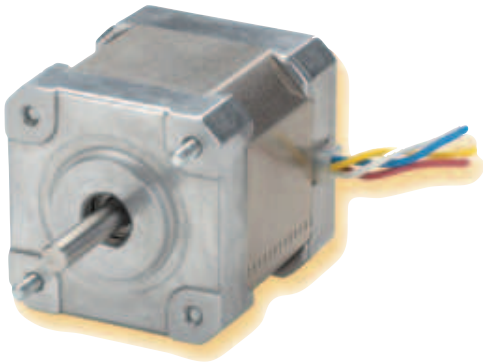


SIZE 17 STEPPER MOTOR DATA

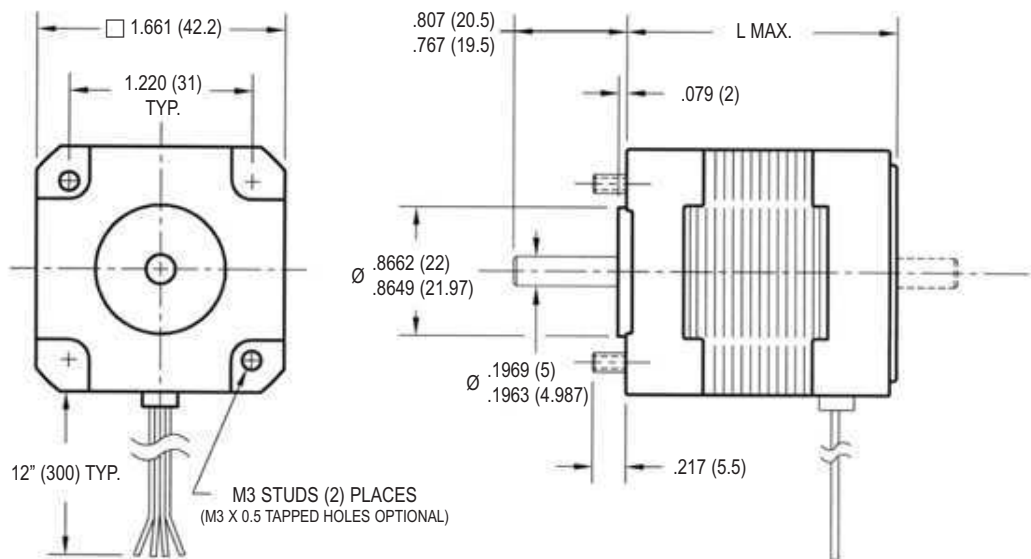


- Step angle: 1.8°
- NEMA 17 mounting configuration
- AlNiCo magnets for high speed operation
- Additional windings and customization options available
- CE approved

Specification	Units	Y 20 1713				Y 20 1717	Y 20 1718	
		0033 ✓	0040	0100 ✓	0150	0100	0090 ✓	0230
Rated Phase Current	A	0.33	0.40	1.00	1.5	1.00	0.90	2.30
Phase Resistance	Ω	23.9	15.6	5.6	1.0	4.6	4.2	0.72
Phase Inductance	mH	29.8	11.9	8.5	1.2	10.6	5.8	0.83
Holding Torque Unipolar	oz-in	—	15.9	—	—	—	—	—
	Ncm	—	11.2	—	—	—	—	—
Holding Torque Bipolar	oz-in	19.4	20.5	20.0	18.4	32.7	41.1	41.1
	Ncm	13.7	14.5	14.0	13.0	23.1	29.0	29.0
Detent Torque	oz-in	2.4	2.4	2.4	2.4	2.4	6.4	6.4
	Ncm	1.7	1.7	1.7	1.7	1.7	4.5	4.5
Rotor Inertia	oz-in-s ² x10 ⁻⁴	2.5	2.5	2.5	2.5	4.5	5.1	5.1
	g-cm ²	18	18	18	18	32	36	36
Motor Weight (Mass)	lb	0.4	0.4	0.4	0.4	0.7	0.7	0.7
	kg	0.2	0.2	0.2	0.2	0.3	0.3	0.3
Maximum Voltage	V	40	40	40	40	40	40	40
Motor Length (Max)	in	1.34	1.34	1.34	1.34	1.69	1.81	1.81
	mm	34	34	34	34	43	46	46
Std. Leadwire Config. ⁽¹⁾	—	2	2	2	2	2	2	2
Std. No. of Leads	—	4	4	4	4	4	4	4

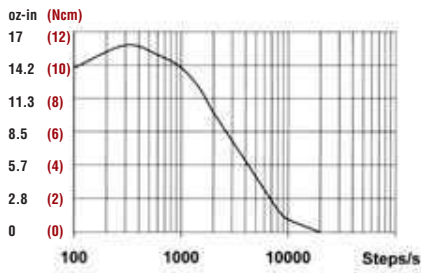
✓ Available through the MotionExpress program.

(1) For standard leadwire configuration see page 18.



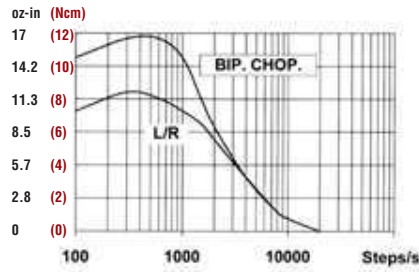
PULL-OUT TORQUE CURVES

Y 20 1713 0033



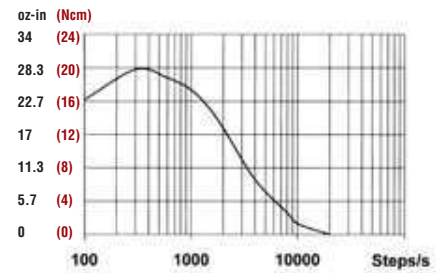
Drive: Bipolar chopper, 36V, 0.33A/Phase

Y 20 1713 0040



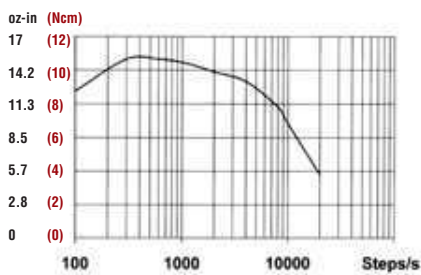
Drive: Bipolar chopper, Series 36V, 0.29A/Phase
Drive: Unipolar L/R, 36V, RS=70ohm

Y 20 1713 0100



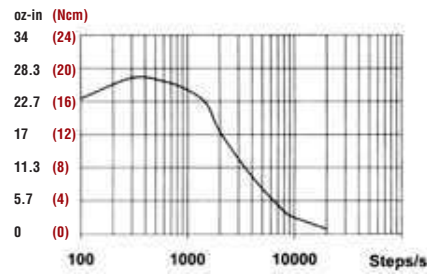
Drive: Bipolar chopper, 36V, 1A/Phase

Y 20 1713 0150



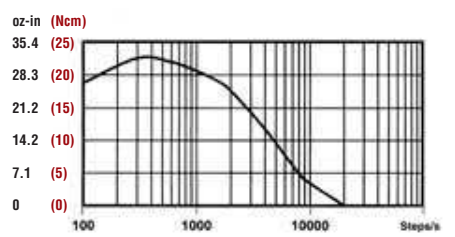
Drive: Bipolar chopper, 36V, 1.5A/Phase

Y 20 1717 0100



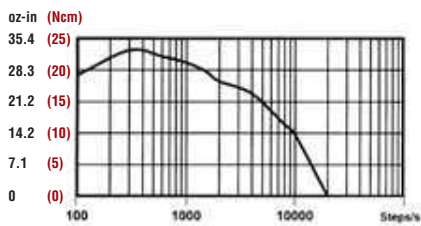
Drive: Bipolar chopper, 36V, 1A/Phase

Y 20 1718 0090



Drive: Bipolar chopper, 36V, 0.9A/Phase

Y 20 1718 0230



Drive: Bipolar chopper, 36V, 2.3A/Phase